

02 **EARTH HOUR** 2010

02 **IMPORTANCE OF
BIODIVERSITY**

05 **ACTION DAY: WATER
& BIODIVERSITY
CONFERENCE**

09 **BABY BOOM**

REGULARS

01 **CEO'S WINTER MESSAGE**
Nokulunga Maswana's farewell message

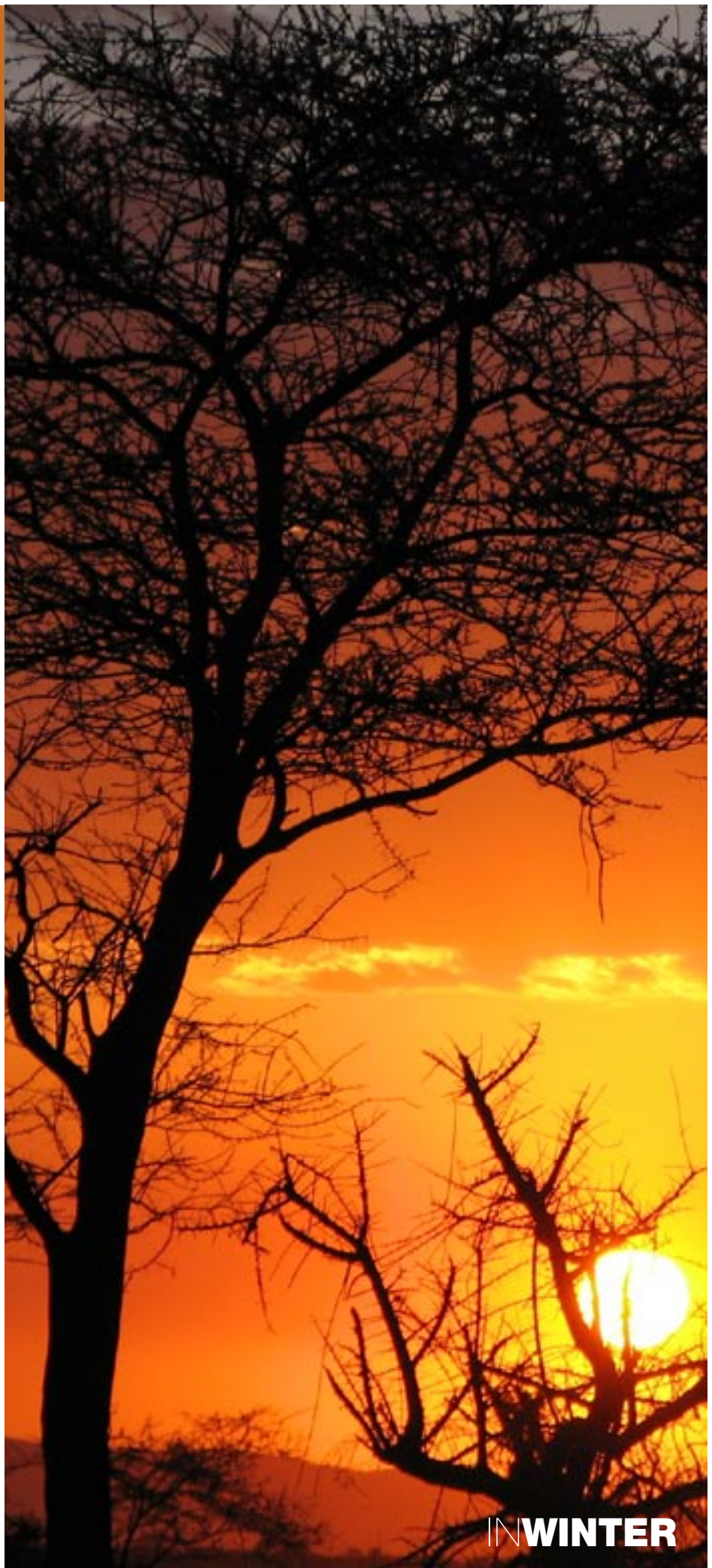
03 **FOCUS ON**
Double Mouth: Magnificent campsite

04 **WILD COAST PROJECT**
Environmental competition at Mkhambathi

07 **CONSERVATION HIGHLIGHTS**
Penn State University Field Study programme

09 **ECO WARRIORS**
Meet the team

10 **UP CLOSE AND PERSONNEL**
New appointments, condolences and training



BECAUSE EARTH MATTERS

With the onset of winter and the FIFA World Cup almost upon us, take advantage of this incredible time in South African history to showcase the unique, significant and spectacular biodiversity of the Eastern Cape to the world. We now have the perfect opportunity to promote our amazing province and to show visitors exactly how much cultural, historical and natural wealth we have on our doorstep. Carry this responsibility with pride and enthusiasm.

Let us hold true to and help implement the ECP vision of being the premier entity in biodiversity management through mutually beneficial partnerships. I encourage your continued enthusiasm and participation in bringing this vision to reality. Contributing to this, ECP has many ongoing initiatives and projects that we need to nurture and support, such as the Wild Coast Project, People and Parks initiatives and Public Private Partnerships.

As there are a host of activities and events to report on as well as to look forward to, this Winter issue of Earth Matters promises, as always to be a very informative and captivating issue. Take note of the extensive spread showcasing the magnificent Mega-reserve, Baviaanskloof. Complimenting this overview is the exciting addition to the Baviaanskloof rhino family. Take an interest in your fellow colleagues in the profile of the Double Mouth Reserve Manager, Xolani Nikelo. For a personal account of one of the exquisite reserves on offer in the Eastern Cape, read up about a relaxing camping experience at Double Mouth which is only fifty minutes outside of East London.

Don't forget to fill out the survey on the back page. Your feedback is very important to us as it will encourage a more stimulating and personal newsletter that is interesting and beneficial for each and every one of us. I extend a welcome to those who have recently joined our team and wish you well in all your future endeavours.



EMAIL

6 St Marks Rd Tel. +27 (0) 43 705 4400
Southernwood Fax +27 (0) 86 613 7856
East London
5213 lavinia.subboo@ecparks.co.za

CEO'S winter message



Dear Colleagues,

It's with a heavy heart that I announce that this will be my last letter to you in Earth Matters as I will be taking up a position in the Western Cape at the beginning of July. My tenure as CEO of Eastern Cape Parks has been challenging, exciting, fulfilling and rewarding, particularly having enjoyed the support of excellent Board members, committed executive members and loyal, dedicated staff. I would like to thank each and every one of you for your contribution to the successes of Eastern Cape Parks. I ask that you face the challenges of this financial year with enthusiasm and fervor, always mindful of our responsibilities as trustees of the earth.

2010 is the International Year of Biodiversity and to mark this occasion and the International Day of Biodiversity on 22 May, Eastern Cape Parks and the Baviaanskloof Mega Reserve hosted South Africa's Biodiversity Action Day and Conference. The theme of the conference was Water and Biodiversity. As we are all startlingly aware, water, or the lack thereof, is rapidly becoming a critical focal area of biodiversity. Well done to all involved in this highly successful and significant event.

ECP's 2010 Game Auction was well supported with an amount of R 9,370,600 raised which, after costs, is ploughed back into conservation. This auction forms part of ECP's animal management plan to manage the provincial protected areas according to sound ecological principles. Indigenous species are only removed when there is sufficient ecological motivation. In appropriate reserves, a predator simulation model was used for the first time as a guideline to assist in determining the number of indigenous species to be removed. All alien animals are being systematically removed and only species indigenous to a reserve will be introduced into that reserve. Species are only introduced into areas where most of their behavioural and ecological needs can be met.

The official launch of Hluleka is another milestone in the history of Eastern Cape Parks. Hluleka is a marine protected area as well as a nature reserve offering first class accommodation in a spectacular setting overlooking the Indian Ocean on the magnificent Wild Coast of South Africa. The new accommodation at Hluleka Nature Reserve offers seven luxury four-bed chalets (over R8 million in construction costs). The launch of Hluleka is not only an opportunity to promote one of our flagship destinations, it's also significant in showcasing the role that ECP plays in the Wild Coast with regard to marine protected areas and community beneficiation.

ECP and the Eastern Cape Tourism Board are in the throes of a merger process. The merger comes about through the identification of a need for the creation of improved synergy between conservation and tourism in the province and identifies clear opportunities for service delivery and development through the application of an integrated model for tourism and conservation in the protected areas of the province. It has been identified that such a model could have significant potential in impacting more effectively our ability to create employment, addressing the challenges of rural development and economic transformation in the province through growing the tourism potential within our protected areas.

The Provincial Tourism Master Plan calls for an unleashing of this potential through the creation of the necessary synergy between tourism marketing, product development and the natural attractions and wilderness experiences located in the province. The rural development strategy of the province identifies tourism in rural areas as critical to the non-farm rural economy in the province. The nature reserves within the provincial parks estate are spatially aligned and located within some of the most impoverished rural areas whilst they retain some of the most sought after natural attractions the Eastern Cape has to offer visiting tourists. Tourism development in the Eastern Cape is described as a missed opportunity which has the potential to grow and contribute both directly and indirectly to economic growth and development in the provincial economy.

I ask that you fully support this process in the interests of a vibrant Eastern Cape economy and always remember our promise to the earth!

My thanks and best wishes to all of you.



earthhour2010

All around the world, famous landmarks were engulfed in darkness for one hour, on 27 March 2010, in support of Earth Hour. In South Africa, this included the Union Buildings in Pretoria, Table Mountain in Cape Town and the Moses Mabhida Stadium in Durban. Closer to home, many ECP employees took on the challenge in their own homes, supporting this global initiative to raise awareness about climate change. This year, more than 4000 cities and towns across 125 countries, including 14 African countries, took part in this event. Earth Hour is all about working together to create a sustainable low carbon future for our planet. Awareness has been raised substantially about climate change issues since the inception of Earth Hour in Sydney, Australia in 2007 by the World Wildlife Fund.

As the premier entity in nature conservation in the Eastern Cape, ECP is in full support of initiatives like Earth Day. ECP, as a company, aims to leave behind as small a carbon footprint as possible, endorsing schemes such as Earth Hour and Earth Day. As this year's Earth Hour was such a success, we all look forward to taking part just as enthusiastically in next year's event.

EARTH DAY

22nd April marked the annual celebration of World Earth Day, the 40th anniversary since its inception in 1970. Earth Day was celebrated in more than 175 countries and raised awareness and appreciation for our impact on the Earth's environment. This year Earth Day coincided with the World People's Conference on Climate Change, held in Cochabamba, Bolivia.

Eastern Cape Parks reminds you that you need not be a policy maker or industrial leader to make a contribution to Earth Day and longer-term environmental sustainability. Simple day-to-day actions can have a significant impact in the long run:

- Make use of public transportation, walk or ride a bike instead of driving
- Combine activities to decrease the number of car trips
- Abstain from meat at least one day a week – this will decrease the impact of carbon emissions from the livestock industry
- Pick up litter
- Use environmentally friendly cleaning products
- Take shorter showers and use a restricted flow shower head
- Use a reusable water bottle and shopping bags
- Turn off lights when there is no-one in the room
- Receive and pay bills on-line
- Use reusable containers for takeaways, and not Styrofoam or disposable packaging
- Shop at a local farmer's market and buy local and organic food
- Recycle as much as possible

REMEMBER TO DO YOUR BIT!



importance of biodiversity

DEFINITION:

BIODIVERSITY IS THE VARIETY OF LIFE: THE DIFFERENT PLANTS, ANIMALS AND MICRO-ORGANISMS, THEIR GENES AND THE ECOSYSTEMS OF WHICH THEY ARE A PART.

Every living thing has a place in the 'balance of nature', and upsetting that balance can have devastating effects. If we are not careful and do not protect and conserve our planet's biodiversity, we will be the ones to suffer from this imbalance. Biodiversity provides us with many sustainable commodities such as plants, animals and micro-organisms which we rely on for many biological processes. These processes are vital to our existence, and for the health of the planet. This is why it is absolutely essential for

ours, as well as the earth's, well being that we protect biodiversity to our utmost ability.

2010 was declared International Year of Biodiversity by the United Nations and Eastern Cape Parks has taken this declaration very seriously. This year's initiatives include the expansion of protected areas through embarking on a Stewardship programme, as well as the 2010 Conference and Biodiversity Action Day aimed at landowners and agricultural producers. All these contribute greatly towards fulfilling ECP's promise to be a responsible trustee of the earth.



DOUBLE MOUTH NATURE RESERVE: magnificentcampsite

As I soak up the spectacular view of the ocean from our campsite, the haunting cry of the fish eagle as it calls to its mate echoes across the idyllic setting that is Double Mouth. This coastal reserve is only a 90 km drive from East London, but its tranquil beauty inspires the feeling of complete seclusion and of having escaped the harsh reality of the outside world.

Double Mouth is one of the smaller ECP reserves at only 3 424 ha. Comprising a beautiful stretch of coastline with magnificent ocean views and lush bushveld that is home to a few of the smaller buck like the duiker and bushbuck, the reserve is a veritable jewel along the East London Coast. All year round in the reserve and especially around the campsite, there is prolific bird life

as well as abundant indigenous flora. On the surrounding hills overlooking the ocean the aloe thrives, creating a dramatic backdrop for the estuary that curves around the mountain behind the campsite. Fishing along the coast and in the estuary is plentiful and is one of the relaxing pastimes visitors to Double Mouth enjoy. Please remember to obtain a permit from the Post Office. While hiking the hilltops or relaxing on the beach, a glimpse of dolphins frolicking in the waves or of a whale, leaves a feeling of wonderment to be privileged enough to view one of these graceful creatures in their natural habitat.

Visitors to the Double Mouth Reserve are in agreement that the facilities and sites are clean

and well maintained at all times. There are 30 grassed sites, all equipped with electricity points and running water and are positioned under a grove of pine trees allowing for shade and shelter. The ablutions consist of toilets, showers and basins and are in the centre of the campsite for easy access. This campsite is easily rated as a safe, peaceful option in the area.

As the sun sets behind the mountains and the estuary, the peace and natural beauty of Double Mouth inspires a feeling of utter contentment and appreciation of this truly lovely nature reserve.



ENVIRONMENTAL COMPETITION AT MKHAMBATHI

Within the context of rural development, there is a general perception that nature reserves or Protected Areas should provide tangible financial benefits to surrounding communities. While this may be an important consideration, there are other indirect advantages which may be just as meaningful and valuable to the community as a whole. The recent environmental competition held for surrounding schools in the Mkhambathi Nature Reserve is a case in point.

The competition was co-ordinated by the Wild Coast Project Outreach Officer, Nondumiso Soshukuma, and prizes were provided by the project. The purpose of the competition was to promote environmental education in the communities adjacent to Mkhambathi through the intervention of the schools. The theme of the competition was WATER IS LIFE.

An outstanding feature of the competition was the joint participation and support of the different government institutions. The Deputy Director of the Department of Education Mrs Mdutshane and Ms Norholela, an Education Development Officer pledged their support and emphasised that Environmental Education is not an 'add on' but an inherent part of the natural sciences and life orientation curricula. The representative from SANBI advised the school principals about the resources that they can tap into including getting free maps and support from SANBI for

beautification of schools. DEDEA was represented by Ms Khumbuzile Luthuli and ECP by Mr Vuyani Mapiya the Mkhambathi reserve manager. Mr Khuzwayo represented the Mkhambathi Trust. Also represented were SAPS, OR Tambo District Municipality and Ngquza Hill Local Municipality.

The competition was divided into two categories, (i) general cleanliness and care for the environment, and (ii) cultural contributions which consisted of plays, musical and poetry items.

The assessment team comprised of five representatives and six observers from various institutions and was led by Mr Langa from SANBI. In the first category, assessment criteria included littering, well managed landfills for rubbish, clean school grounds, classrooms and toilets, no leaking taps, school gardens and lawns trimmed and neat and the general positive ambience of the school.

- The results of this category were as follows:
- First** - Lumphondo JSS whose prizes included a trophy and excursion worth R10 000 for 20 children with their teacher to Mkhambathi Nature Reserve.
 - Second** - Mkhankomo JSS
 - Third** - Mngwenyeni JSS

Six schools performed both English and isiXhosa musical items and poems in between speakers.

The winners were announced by the Deputy Director of the district Mrs Mdutshane who is also a language specialist, and were as follows: First - Mkhankomo JSS whose prizes included a Trophy, and excursion for eleven learners and two teachers to Mkhambathi Nature Reserve Second - Mkhabela JSS

Mrs Mdutshane emphasised that the prizes are for the development of schools and they must not be kept in the principal's office. She also announced that the event would be held annually - the schools which had received the trophies would have to defend them in 2011. Mr Mapiya advised that the reserve officials will pay random visits to the schools to ensure that they maintain the standards of the competition and also manage their waste properly.

In conclusion, Mr Khuzwayo the member of the Mkhambathi Board of Trustees expressed his gratitude to the organisers of the event. He also shared the information that the Trust in partnership with ECP is planning to build an environmental centre at Shelly Beach so that their children can learn more about nature conservations and also develop their careers.

After the presentation the school principals joined the children in singing and dancing late into the afternoon.



22 MAY 2010
BAVIAANSKLOOF
MEGA RESERVE



CONFERENCE & BIODIVERSITY
ACTION DAY

2010 is the Year of Biodiversity.

To mark this occasion and, in observance of the International Day of Biodiversity on 22 May, Eastern Cape Parks and the Baviaanskloof Mega Reserve hosted South Africa's Biodiversity Action Day and Conference at TerraPi. The theme of the conference, aimed at landowners and agricultural producers located within the Baviaanskloof Mega Reserve's Planning Domain, was Water and Biodiversity.

Linking ecosystem services to past activities of the community, taking it forward into the valuation of the resources and services, and then defining a solution through implementation of this value into projects that will address the sustainable use of the resource, is something that South Africa has, for some time now, been considering. In acknowledgement of the 2010 International Day of Biodiversity, Eastern Cape Parks recently hosted a Biodiversity Action Day and Mini Conference at Baviaanskloof Mega Reserve. The event was held at TerraPi - a diverse community of conservation enthusiasts wholly dedicated to healing the land through tourism, education and sustainable permaculture practices. TerraPi lies along the southern border of the Baviaanskloof Mega-Reserve.

Activities began on Friday the 21 May with 96 scholars from local schools focusing on fun, practical, action-orientated activities, aimed at participants gaining a sense of achievement and experiences that will influence future behaviours. 14 guest speakers and 70 high powered invited delegates, made up the compliment of attendees at the conference on Saturday the 22 May, International Day of Biodiversity. It was aimed at generating a genuine awareness of the impacts of land-use practices on ecosystem services, in the hope that landowners would gain a far greater understanding of ecosystem services, natural capital and biodiversity and how they are influenced. This knowledge can then be built upon to generate a significant shift in land-use practices and biodiversity stewardship contracts can be encouraged.

The Biodiversity Stewardship concept was launched on the day and an introduction and some background was presented by

Tracey Potts ECP's Coordinator: Baviaanskloof Mega-Reserve. A discussion session regarding landowner agreements followed, where many questions by interested attendees were fielded by the team.

To kick-start this very interesting and informative Mini-Conference, a key-note address was delivered by Nokulunga Maswana, CEO of ECP. Topics like 'farming with nature' and a panel discussion on the incentive scheme for ecosystem management followed. Making up the panel was Myles Mander, a consultant for Green Futures. Myles stood out as well informed and knowledgeable with regard to the topic of the day. Japie Buckle, Provincial Co-ordinator for the Northern, Eastern and Western Cape from Working for Wetlands presented a well-researched presentation. Mike Powell represented the research aspect of the group as he is part of the Restoration Research Group from Rhodes University. All on the panel gave very interesting and individual perspectives on issues and situations surrounding biodiversity in the Baviaanskloof area.

The Mini-Conference was an overall success, although it was hoped that there'd be more landowners in attendance. Far from dampening their spirits, this has fuelled Tracey Potts and her team of organisers to reach out even more determinedly to educate landowners about the advantages of stewardship.



BIODIVERSITY
ACTION DAY



SITY
AY
2010

CONFERENCE & BIODIVERSITY ACTION DAY

2010

BAVIAANSKLOOF MEGA RESERVE - WORLD HERITAGE SITE

Baviaanskloof, meaning the 'Valley of the Baboons', is arguably one of the most bio-diverse areas within southern Africa with representation of seven of South Africa's eight biomes in the Planning Domain of the Baviaanskloof Mega-Reserve. It is at the convergence of three of the world's top 36 biodiversity hotspots (Cape Floristic Region, the Succulent Karoo and Maputo-Pondo-Albany Thicket). Baviaanskloof has some spectacular riverine forests, with giant Yellowwood trees which is the South African national tree. This creates a unique vegetation system that ranges from succulents to spectacular fynbos flowers and shady green forest patches. Throughout the Baviaanskloof there is evidence of the earliest inhabitants, the Khoi San, in the rock paintings that they left behind. The Baviaanskloof feeds rivers that flow into the Indian Ocean in the area between Port Elizabeth and Cape St Francis. Approximately 30% of South Africa's export oranges are grown in the Baviaanskloof Mega-Reserve Planning Domain.

The unique ecosystem has contributed to a wide range of ecosystem goods and services, such as water and carbon sequestration, to the communities living around it, creating a buffer between the arid Nama Karoo and the coast with its unique ecosystems. The Spekboom (Porkbush), a tall shrub that is indicative of the Subtropical Thicket, has shown to have unique carbon sequestration capabilities, and this is used to drive the Spekboom restoration project in this area. It is also a highly palatable plant that can indicate overgrazing very quickly.

The Baviaanskloof Mega Reserve Planning Domain has a nature reserve of vast wilderness at its core, which is also a World Heritage Site and is a living landscape moving towards environmentally sensitive and ecologically responsible land-users.



livinglands



EASTERN CAPE
PARKS



CONSERVATION HIGHLIGHTS
FIELD STUDY
PROGRAMME

CONSERVATION HIGHLIGHTS

THE FIELD STUDY PROGRAMME WAS A HUGE SUCCESS AND ALL PARTIES INVOLVED ARE EXTREMELY KEEN TO CONTINUE THIS PROGRAMME WITH AS MUCH ENTHUSIASM AND TO ACCOMPLISH AS MUCH, IF NOT MORE NEXT TIME AROUND.

Mutually beneficial relationships between institutions should be kindled and nurtured on a more regular basis. These relationships are an excellent way of learning about each other, gathering information that can benefit both parties and also giving the opportunity to gain an alternate perspective on certain situations and issues. Professor Robert Crane of Penn State University (PSU) in Pennsylvania, USA, was the initiator of such a programme with a memorandum of understanding (MOU) signed between PSU, ECP and the University of Cape Town.

This Field Study Programme kicked off on 25 January with a total of 16 students arriving in Cape Town for 10 weeks of experiencing, learning about and interacting with the nature reserves along the Wild Coast. Their journey started off with a trip from Khayalitsha, the infamous township of Cape Town, through to the affluent area of Stellenbosch and the winelands, giving them a precursory perspective on the diversity of South African society. The group headed on to the Wild Coast where they would be staying at the Haven hotel in the Dwesa-Cwebe Nature Reserve, which was used as their base.

The group was made up of 16 undergraduate students and two advisors. Three lecturers from PSU flew in at three week intervals to present their topics, with themes ranging from "Societies and Environments" in the new South Africa" to "Fire, Biochemistry and Landscape Change" to the students. The programme also included things like experiencing a day in the life of an isiXhosa women. At the end of every week, photo essays of the weeks' events had to be produced. At the conclusion of the programme the students had to propose a research project that would impact positively on and possibly improve on the people and parks along the Wild Coast. Proposals like "Water usage within and outside of protected areas" and "Mussels and the impact of distribution on the environment and the community" were submitted.

Patrick Mudzanani, the Reserve Manager at Dwesa-Cwebe Nature Reserve, and Vuyani Mapiya from Mkhambathi Nature Reserve, assisted

the students wherever necessary with their field studies. Jan Venter from Scientific Services arranged and supervised activities of interest to compliment the students' programme while they were at Mkhambathi Nature Reserve. Jan also took the students to do grass surveys as well as animal observations, where they counted the animals and made note on what and how much the animals ate.

The outcome of this programme aims to impact positively on the people and nature reserves of the Wild Coast through education and capacity building work as the students gain more of an understanding of the trials and circumstances that the inhabitants face on a daily basis. The programme will also assist in building academic relationships and access to funding for further research and studies on the area, benefitting the community and the land they live on.



PORT ST JOHNS TO COFFEE BAY

Mpho Pebane, ECP's Product Development Manager, recently took on the exciting challenge of a 61km, five day hike from Port St Johns to Coffee Bay with a hiking club from Welkom, for the purpose of evaluating the trails and accommodation along that part of the coastline.

The hike started off at Amampondo Backpackers in Port St Johns, with a sleepover at Silaka Nature Reserve, along the coast through Hluleka Nature Reserve and then ending off at Bomvu Backpackers in Coffee Bay. Taking on this dramatic and exquisite coastline was an incredible experience for the hikers with breathtaking views, dolphin and whale sightings, adventurous river crossings and memorable encounters with the locals in the villages.

As the hiking market along the Wild Coast is in such demand, Mpho has put forward a proposal regarding the condition and suggestion about improvement of the facilities along the way. Mpho's hiking experience leaves him confident that, if these hiking trails through Silaka and Hluleka Nature Reserves are properly planned and co-ordinated and the necessary upgrades are implemented, there will be tangible benefits for these reserves.



2010 GAME AUCTION



ECP hosted its 2010 Game Auction on 29 May at Thomas Baines Nature Reserve. Over eight hundred animals were on offer by way of catalogue sale, including eland, kudu, buffalo and white rhino. ECP's animal management programme is designed to manage the provincial protected areas according to sound ecological principles. The auction sale formed part of this programme to manage large mammals and to remove alien species from the ECP Nature Reserves in order to better conserve and protect the eco-systems of these reserves. Indigenous species are only removed when there is sufficient ecological motivation. In appropriate reserves, a predator simulation model is used as a guideline to assist in determining the number of indigenous species to be removed. As many alien (or exotic) animals as possible are removed.

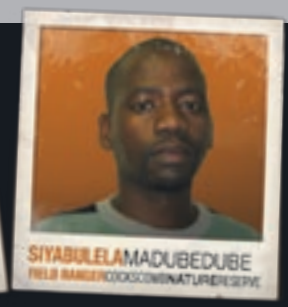
River, photographs of the white rhino on auction and a powerpoint marketing presentation of the flagship nature reserves.

Refreshments were served as buyers and visitors mingled and shared ideas. "Choem" Hayes, his team from Roy Hayes Auctions and the game capture team, E'scape Game Services, were in attendance to field questions from buyers. Face painting and a jumping castle to entertain the children, a Rotary food stall providing tasty treats for the peckish and the presence of Rory Kockott, scrumhalf for the Sharks, added to the excitement of the day. The auction began promptly at 11 am preceded by a welcome address by Albert Mfenyana and an overview by Dave Balfour. "Choem Hayes" took centre stage displaying his famous entertaining form and the auction was off to an exciting start...



The event, well co-ordinated and organised by ECP staff, was a huge success. Buyers began arriving and registering at 9 am, receiving buyers cards, a catalogue listing the animals on auction in Lots a brochure and "goodie bag" thanking the buyers for their attendance. Large screens were positioned around the auction tent, providing buyers with the opportunity to view a video of the buffalo in the boma at Great Fish

Congratulations must go to the whole Eastern Cape Parks team hosting the event. From the warm welcome received at the gate, through the reception that buyers and visitors received at the auction, to the luncheon for buyers after the auction, the overall friendly, conducive atmosphere resulted in a highly successful auction realising R 9,370,600, with all of the animals sold.



Give us a brief background of yourself. *I grew up in Peddie with my family and we later moved to Port Alfred. I matriculated from Nomzamo High School in Port Alfred and went to NMMU at the George campus to study for a National Diploma in Nature Conservation. I spent a year at West Coast National Park for my in-service training. I worked at Pumba Game Reserve for a month before resigning, but a few months later I began working for African Global Skills academy as the Conservation Facilitator and later as an assessor. I also worked for Nelson Mandela Bay Municipality as a Conservation Officer.*

What is your most significant achievement? *One of my dreams after obtaining my Diploma was to be a Reserve Manager within seven years of being in the field. I am proud to say that I have achieved this in five years of working in Nature Conservation.*

What is or was your career highlight? *I was an active committee member for the official launch of the Walk Safe Programme in NMBM.*

Are you married/do you have children and how old are they? *I am engaged to Vuyokazi Lubambo and we do not have children as yet.*

What is your favourite entertainment or what do you do to relax? *I enjoy loud music, watching television or going to the movies. I also enjoy shopping with my fiancée. Chatting to my parents is also another one of my favourite things to do.*

What is your favourite read? *"Africa's Greatest Entrepreneurs" by Moky Makura and "The Heart of Redness" by Zake Mda.*

What is your promise to the earth? *I have seen gaps in terms of awareness about environmental issues and conservation amongst our people. Stakeholders and environmental/conservation organisations need to come together and raise awareness in communities through initiating informal conversations. Urban communities need special attention as they have a bigger impact on the environment. I believe education and awareness will go a long way in protecting our planet.*

Give us a brief background of yourself. *I was born and bred in small village named Bacleesfarm in Ntabethemba in Whittlesea Cluster which is just a stone's throw from Tsolwana Nature Reserve. This set up afforded me early exposure to interactions and some complications with conservation authorities and the rural communities. I matriculated at Sizamile Senior Secondary school and joined the Eastern Cape Parks Board in 2007 as a field ranger. This move gave me an opportunity to pursue a National Diploma in Nature Conservation and I am very proud to say that I am now on the second level at UNISA.*

What is your most significant achievement? *As a member of the monitoring team, I contributed immensely to the success story of the re-introduction of the black rhino into the Baviaanskloof.*

What is or was your career highlight? *Having entered conservation starting from the bottom, I want to work my way up to be a Field Ranger.*

Are you married/do you have children and how old are they? *I am happily married and have been blessed with two amazing children, both boys. They are seven and four respectively.*

What is your favourite entertainment or what do you do to relax? *I love spending time with family and friends, especially sharing jokes under the evening sky with a good piece of braaivleis.*

What is your favourite read? *I enjoy all books and love reading, especially Joel Osteen's motivational books.*

What is your promise to the earth? *To live in such a way that will make generations who follow me proud of the contribution I have made to the effort for all species to co-exist. I also want to leave behind as small a carbon footprint as possible so that the earth will sustain and recreate itself and carry on as it did before I arrived.*

SCENE AROUND



- 1 Chwayita Vuyo - PA to Commercialisation Director and Lelethu Sawuti - Thomas Baines Reserve Manager at the 2010 Game Auction.
- 2 Mpho Pebane, ECP's Product Development Manager on the hike he took from Port St Johns to Coffee Bay.
- 3 Albert Mfenyana, General Manager: Environmental Affairs DEDEA.
- 4 Thandekile Tilese, Bongani Sihluku and Vuyisile Thembanani, Field Rangers at Baviaanskloof Nature Reserve.



BABYBOOM!

A third baby rhino was witnessed at Baviaanskloof Mega Reserve in October/November 2009 by one of the field rangers who regularly monitors the rhino. The calf is a female, born to a six year old black rhino and is her first calf. This is a significant step forward for the rhino population at Baviaanskloof as it bodes well for continued population growth in the future. Since 2007, when six black rhino were introduced to Baviaanskloof, all females have had calves, confirming that the rhino have adapted well to the area.

UPCLOSE AND PERSONNEL

APPOINTMENTS

The following reserve manager appointments have taken place:

Mr Gavin Shaw	Cockscomb
Mr Sipho Khumalo	Dwesa/Cwebe
Mr Sizwe Mkhulise	Tsolwana
Mr Thapelo Motebo	Mpofu/Fort Fordyce
Mr Patrick Zakhe	Groendal/Island
Mr Xolani Nikelo	East London Coast
Mr Shadung Kgaugelo	Formosa
Mr Alpheus Phaho	Hluleka
Ms Lelethu Sawuti	Thomas Baines/ Watersmeeting

We congratulate these reserve managers on their appointments and wish them every success for the future, secure in the knowledge that they will lead and manage their reserves by example with dedication and commitment.

CONDOLENCES

It is with regret to announce that the following employees passed away during this period and we extend our sincere condolences to their family members:

Mr Ben Phuphuma	Tsolwana
Ms Flora Dingiswayo	Dwesa/Cwebe
Ms Ntabakazi Sindi	Double Drift
Mr Lungisa Luviso	Watersmeeting

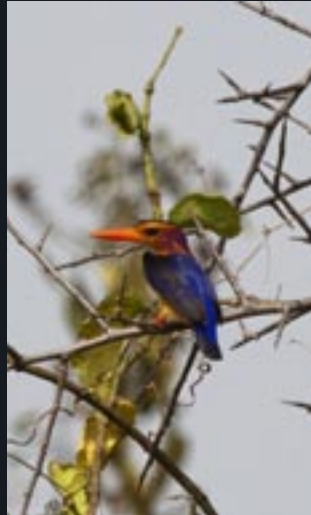
TRAINING

The process of focused capacitation, particularly for the conservation employees, continued during this period with Reserve Managers undergoing a management development programme as well as training on Occupational Health and Safety and disciplinary matters. Certain employees also underwent Peace Officer/Law Enforcement and Peer Education training.



“For in the true nature of things, if we rightly consider, every green tree is far more glorious than if it were made of gold and silver.”

Martin Luther



WILD COAST TALE

THE PYGMY KINGFISHER

Saw you flying by - flash of turquoise blue....my bird of paradise...

While the words of the song might be of a figurative nature, there is nothing abstract about the flash of turquoise and deepsea blue of a pygmy kingfisher as it jets through a forest clearing from one vantage point to the next. If you are lucky enough to see one up close, you can be forgiven for thinking that the day after the Creator rested, He reviewed His handiwork and then decided that it was missing something – something special! He then crafted this most exquisite member of the secretive forest family and gently released it into the ever grateful arms of Mother Forest.

THERE IS NOTHING ABSTRACT ABOUT THE FLASH OF TURQUOISE AND DEESEA BLUE OF A PYGMY KINGFISHER AS IT JETS THROUGH A FOREST CLEARING FROM ONE VANTAGE POINT TO THE NEXT

Unlike the majority of their cousins, including the very similar malachite kingfisher, pygmy kingfishers do not hover or dive into the water in search of fish or tadpoles. Instead they have adapted to forest edges and glades where they sit motionless, occasionally bobbing their heads up and down – often the only sign of their presence. From their perches they scan the ground for insects and juvenile lizards and geckos, which they snatch with their bright orange bills and hammer to death on a branch before swallowing.

But as the balmy summer turns, and their early morning basking sites are enveloped by the lengthening shadows of winter, the pygmy kingfishers slip away one by one headed for the noisy jungles of Central Africa. Upon their arrival they are welcomed back by old friends - raucous troops of Chimpanzees, the dark ghosts of tummy rumbling forest elephants with their tusks that hang straight down, and screeching African Greys. And of course the all-embracing arms of Mother Forest who will comfort and provide for them, and whose afternoon tears will fall for all her children who did not make the trip home.

Peter Tyldsley

With this, the ninth edition of Earth Matters, we would like to get your feedback on the publication. Please take a few minutes to fill in this survey and return it to Colwyn Loggenberg.

EARTH MATTERS SURVEY

Do you receive the Earth Matters newsletter every quarter?

Y	N
---	---

Do you find the design of the newsletter visually appealing?

Y	N
---	---

Do you read less than 50% of the content?

Y	N
---	---

Do you find the articles you do read relevant and interesting?

Y	N
---	---

Are you kept up to date with ECP happenings effectively?

Y	N
---	---

Do you like the 'Earth Matters lifestyle' section?

Y	N
---	---

What would you like to see in Earth Matters that isn't included?

Which part of the newsletter do you read regularly?

Remember to always keep the lines of communication open by contributing any interesting news or events that you feel the rest of ECP would benefit from reading about. The newsletter is a vehicle for you to use to communicate exciting news and achievements to the greater ECP team. Please take the time to fill out the survey - this is the third time it is being run on the back of Earth Matters, as your feedback is of the utmost importance to us.

Communication is a two-way path and it would be to the benefit of the ECP team if everyone contributed to the newsletter where they see fit. Please feel free to get in touch with Colwyn to share your news!

Little Matters

Name: _____

Age: _____

Parent/Guardian name: _____

Contact No: _____

H	L	U	L	E	K	A	S	P	D
P	N	Y	R	A	J	N	V	T	C
E	A	D	W	E	S	A	S	O	R
A	T	D	E	A	K	A	I	L	H
R	U	Y	R	M	O	B	R	S	I
T	R	B	U	C	V	K	W	E	N
H	E	F	D	G	H	I	U	J	O
Z	K	L	L	M	N	A	B	D	C
D	I	E	W	I	N	T	E	R	U
W	R	C	O	N	S	E	R	V	E

Complete the following word puzzle by finding 10 hidden words that relate to the content of this Winter edition of Earth Matters. The words can be found horizontally, vertically or diagonally and are as follows:

- | | |
|------------|--------|
| Hluleka | Kudu |
| Rhino | Dwesa |
| Earth | Zebra |
| Wild Coast | Nature |
| Conserve | Winter |

Send the circled word puzzle answers to the marketing unit at ECP head office and the first entry to be picked in a lucky draw will receive a prize from the CEO.